

WELCOME
to creating your future



**27th Orien
tation
Days**

WELCOMING
● MOVIE
SCREENING

● KARAOKE
GAME
NIGHT

● RECREATION
DAYS

● TOUR OF
FAMAGUSTA CITY

● WELCOMING
EVENT
● TOUR OF
THE CAMPUS

geleceğini yaratmaya
HOŞ GELDİN



07-20
02 | 2025



Content

CONTENT	
RECTOR'S MESSAGE	04 - 05
IMPORTANT	07
ACADEMIC CALENDER	08 - 09-10
ORIENTATION DAYS	10
Program	11
Help Desk Locations	11
OPPORTUNITIES	12
NORTH CYPRUS	13
The Hidden Secrets	13
At a Glance	13
Places to Visit	13
LIVING IN NORTH CYPRUS	14
Night Life	14
Theater	14
International Famagusta Art & Cultural Festival	14
Folklore	14
Cuisine	14
Living Expenses	14
Transportation	14
Accommodation	15
EMU's Dormitories	15
Privately-Owned Dormitories	15
CAMPUS EVENTS	16
Student Clubs	16
International Student Societies and Events	16
Events	17
STUDENT AFFAIRS	17
Disciplinary Actions	17
Transportation	17
Student Services Office	18
Apostille Approval Procedures	18
Embassy Procedures for International Students	18
Call Center	18

IMMIGRATION PROCEDURE	20
Important Information	20
ACADEMICS	21
Registration	21
Academic Advising	21
Class Attendance	21
Grade Calculation	21
FACILITIES AND SERVICES	22
Identification Cards	22
Health Center	22
Psychological Support	22
Alumni Communication and Career Research Directorate	22
Canteens and Cafeterias	23
Bank Services	23
Registrar's Office	23
International Office	23
Social & Cultural Activities Directorate	23
Library	23
Post Office	23
Lala Mustafa Paşa Sports Complex	23
Off Campus Facilities	24
ONLINE APPLICATION	25
Online Application Guide and Registration Procedure	25
ACCREDITATIONS	26
BUS SERVICES	27
MAP	28-29
MAP OF CYPRUS	30-31

Rector's Message



Dear Students,

Welcome to Eastern Mediterranean University where you will receive education at the highest standards in the world.

With nearly 15 thousand students from 105 different countries and over 1.000 academics from 35 different countries, EMU is the most significant project of the Turkish Republic of Northern Cyprus as a state-university providing quality education services. As the first and only state university of the Turkish Republic of Northern Cyprus established by law, our university offers its students education and research opportunities at the highest levels world-wide, in accordance with its slogan of "Knowledge, Science, Wisdom, Future". Established in 1979 as the Institute of Higher Technology and transformed into a state university in 1986 under the Statute Establishing the North Cyprus Education Foundation and Eastern Mediterranean University upon the approval of the Turkish Republic of Northern Cyprus Assembly, our university, now known as Eastern Mediterranean University, celebrates its 45th year in education this year. Committed to high-quality education standards, international outreach, global visibility, and academic excellence, our university has integrated numerous success stories, accreditations, national and international collaborations, various memberships, countless academic works, and numerous socio-cultural events into its

45-year history, solidifying its status as a true world university.

EMU has been distinguished as the leading university in the Turkish Republic of Northern Cyprus, according to the latest world university rankings published by the UK-based Times Higher Education. These rankings, among the most widely respected global references, assessed 1,907 universities from 108 countries, placing EMU within the 601-800 band. Additionally, EMU is ranked in the third highest tier among universities in the Republic of Türkiye. The university's international standing has been further affirmed by various independent global ranking organizations. Notably, in May 2024, the Round University Ranking (RUR) listed EMU 6th globally in International Student Diversity category with a score of 99.545, and 113th in International Academic Staff Diversity with a score of 90.364.

In the 2024 Times Higher Education Young University Rankings, which highlight the top universities founded within the last 50 years, Eastern Mediterranean University achieved the rank of 151st globally. Within this category, EMU also claimed the 4th spot among universities in the Republic of Türkiye.

Furthermore, the quality of education provided by our university has been demonstrated by its high rankings in global ranking lists published by many independent ranking organizations such as ShanghaiRanking, QS, U.S. News, Nature Index, and EduRank. The programs of Eastern Mediterranean University accredited by leading independent bodies in various fields of higher education, including ABET, AQAS, CIDA, ASI-IN, EAQUALS, and NAAB, is additional proof that our education quality aligns with international standards.

EMU, a close follower and enforcer of national standards and regulations, views international accreditation and monitoring as fundamental to its advancement. EMU holds full membership in the Turkish Universities Association, the International Association of Universities, the European University Association, the Community of Mediterranean Universities, the Eurasian Universities Union, and the Federation of the Universities of the Islamic World.

Our university has many collaboration and student exchange agreements with prominent universities all around the world, such as ESTIA University in France, the University of Bologna in Italy, the University of Warwick in the United Kingdom, Virginia Tech, the University of North Texas, the State University of New York at New Paltz, and the University of the Incarnate Word in the United States, Woosong University in South Korea, China Three Gorges University in China, and Duesseldorf University of Applied Sciences and Trier University of Applied Sciences in Germany. EMU has memorandum agreements with 195 universities in 47 countries and student exchange agreements with 44 universities worldwide.

Eastern Mediterranean University proudly boasts over 75.000 graduates from various cultures and countries, who have achieved notable success globally. This success is no mere coincidence. Our university offers a vast and green campus equipped with facilities such as the Lala Mustafa Paşa Sports Complex, Yasin Düşüner Stadium, tennis, football, and basketball courts, as well as dormitories, restaurants, markets, and cafes. These amenities, combined with the sports, cultural, and artistic activities organized by our departments, provide a comfortable and secure environment where students can thrive academically and socially in a diverse and international setting. Furthermore, you have the opportunity to join approximately 50 different clubs at our university, including Astronomy and Space Sciences, Mountaineering and Nature Sports, Dance, Theater, Search and Rescue, Photography, Archery, E-sports, Anime, and more,

allowing you to pursue your interests and explore various activities.

Our university also hosts the student societies of our students coming from 105 different countries. With the support of the Rector's Office, these societies organize events where they promote their countries and cultures. By joining your country's student society, you will have the chance to participate in these events and help showcase your nation and engage in activities organized by students from other countries to learn about different cultures.

My advice to you is that, while you fulfil your responsibilities in your professional lives, always take part in social, cultural, sporting and artistic events. Participating in these events will aid in your adjustment to campus life, offer substantial social benefits, and help you build lasting friendships. Additionally, be sure to explore the Turkish Republic of Northern Cyprus, a Mediterranean gem. The island, rich in historical and cultural heritage from various civilizations over millennia, is home to many museums and historic sites. Take advantage of its pleasant climate, clean air, and peaceful surroundings to enjoy the local attractions and have memorable experiences during your stay.

I wish you all immense success and hope that your experience at EMU will be some of the most memorable and fulfilling years of your lives.

Prof. Dr. Hasan Kılıç
Rector





Important Telephone Numbers:

E-mail: info@emu.edu.tr

▪ Eastern Mediterranean University (Operator)	(0392) 630 1111
▪ Security Office	(0392) 630 1444
▪ Dormitories	(0392) 630 1328
▪ Registrar's Office	(0392) 630 1217
▪ Health Center	(0392) 630 2200
▪ Student Services Office	(0392) 630 2950
▪ Social and Cultural Activities Directorate/International Office	(0392) 630 3041 / 2678
▪ International Promotion Office Help Desk	(0392) 630 2444

Academic Calendar

2024 - 2025 Academic Calendar

Eastern Mediterranean University



FALL Semester

September	02-04	2024	2023 - 2024 Summer Term Final Examinations Period
September	06	2024	Last Day For The Submission of 2023 - 2024 Summer Term Grades to The Registrar
September	07-09	2024	Online Application for Summer Term Graduation Make-Up Examinations Period
September	09	2024	Last Day For Submission of The Summer Term Graduation Decisions to The Registrar
September	09-17	2024	Orientation Days for New Students
September	10-11	2024	Summer Term Graduation Make-Up Examinations Period
September	11	2024	Graduation of Students Graduating at the End of The Summer Term
September	12	2024	Last Day for The Submission of 2023 - 2024 Spring and Summer Term 'Incomplete' Grades and Graduation Make-Up Grades to The Registrar
September	11	2024	English Proficiency Test 1st Stage *
September	12	2024	English Proficiency Test 2nd Stage
September	13	2024	Last Day for The Submission of Graduation Decisions of Students Who Will Graduate as a Result of 2023 - 2024 Spring or Summer Term Incomplete Grades or Graduation Make-Up Examination to The Registrar
September	13	2024	English Proficiency Test 2nd Stage, Speaking Session
September	15	2024	Religious Day (Mawlid Sep. 14 Night)
September	17	2024	Last Day for Graduation of Students Graduating at the End of 2023-2024 Summer Term and Graduation of Students Who Complete Their Graduation Procedures Late
September	17	2024	Last Day for Online Course Registration
September	18	2024	Announcement of English Proficiency Test 2nd Stage Results
September	18-20	2024	Course Registration Period (Course Registrations Accompanied by Advisor and Approval of Registration)
September	23	2024	2024-2025 Fall Term Classes Commence First Day of Late Registration
September	30	2024	Last Day for Late Registration
October	01	2024	Academic Year Opening Ceremony **
October	03	2024	Last Day For The Submission of 2023-2024 Spring and Summer Term Letter Grade
October	07	2024	Changes to The Registrar
October	29	2024	Turkish Republic Republic Day (National Holiday)
November	10	2024	Commemoration of Atatürk
November	15	2024	Turkish Republic of Northern Cyprus Republic Day (National Holiday)
November	08-23	2024	Mid-Term Examinations Period
November	25	2024	System Will Be Accessible for Entering Courses to be Offered In Spring Term 2024-2025
December	09	2024	Last Day for submission of University Elective Courses to be Offered in The Spring Term of 2024-2025 by The Elective Courses Commission to The Rectorate
December	13	2024	Last Day for Course Withdrawal Last Day for Entering Courses to be Offered In Spring Term 2024-2025 to The System
December	20	2024	Last Day for Applying to Get Leave of Absence
December	25	2024	Christmas Day ***
December	30	2024	Last Day of Classes
January	01	2025	New Year's Day
January	03-18	2025	Final Examinations
January	23	2025	Last Day for The Submission of Grades to The Registrar
January	24	2025	Last Day for Submission of The Graduation Decisions to The Registrar
January	24-26	2025	Online Application Period for Resit Examinations
January	27	2025	Online Course Registration for Spring Term 2024-2025 Commences
January	30	2025	Fall Term Graduate Graduation Ceremony
January	31	2025	Fall Term Associate / Undergraduate Graduation Ceremony

Academic Calendar

SPRING Semester			
February	03-08	2025	Fall Term Resit Examinations
February	07-15	2025	Orientation Days for New Students
February	10	2025	Last Day for The Submission of Fall Term 'Incomplete' Grades to The Registrar Last Day for The Submission of Fall Term Resit Examinations Grades to The Registrar
March	11	2025	Last Day for Submission Of Graduation Decisions of The Students Who Will Graduate as a Result of Resit Examination to The Registrar
February	11	2025	English Proficiency Test 1st Stage *
February	11-12	2025	Start of Online Application for Fall Semester Graduation Make-Up Examinations
February	12	2025	English Proficiency Test 2nd Stage
February	13	2025	English Proficiency Test 2nd Stage, Speaking Session
February	13-14	2025	Fall Semester Graduation Make-Up Examination Period
February	16	2025	Last Day for Online Course Registration
February	17	2025	Last Day for The Submission of Fall Term Letter Grade Changes and Graduation Make-Up Grades to The Registrar
February	17-19	2025	Course Registration Period (Course Registrations Accompanied by Advisor and Approval of Registration)
February	18	2025	Announcement of English Proficiency Test 2nd Stage Results
February	19	2025	Last Day for Submission of Graduation Decisions of the Students Who Will Graduate as a Result of Fall Term Graduation Make-Up, Resit Examinations or Incomplete Grades to The Registrar
February	20	2025	2024-2025 Spring Term Classes Commence First Day of Late Registration
February	21	2025	Last Day for Graduation for Fall Term Resit Examinations Graduates or Graduation of Students Who Complete Their Graduation Procedures Late
February	27	2025	Last Day for Late Registration
March	03	2025	Last Day for Add/Drop
March	29	2025	Ramadan Bairam Eve
March/ April	30-01	2025	Ramadan Bairam
April	11-26	2025	Mid-Term Examinations Period
April	15-18	2025	Spring Festival
April	23	2025	National Sovereignty & Children's Day
May	01	2025	Workers' and Spring Day
May	05	2025	System Will be Accessible for Entering Courses to be Offered In Summer Term 2024-2025
May	12	2025	Last Day for submission of University Elective Courses to be Offered in The Summer Term of 2024-2025 by The Elective Courses Commission to The Rectorate
May	14-17	2025	Spring Festival
May	19	2025	Atatürk Commemoration, Youth and Sports Day
May	23	2025	Last Day for Course Withdrawal
May	30	2025	Last Day for Applying to Get Leave Of Absence Last Day for Entering Courses to be Offered In Summer Term 2023-2024 to The System
June	04	2025	Last Day of Classes
June	05	2025	Kurban Bairam Eve
June	06-09	2025	Kurban Bairam
June	10	2025	System Will be Accessible for Entering Courses to be Offered In Fall Term 2025-2026
June	11-26	2025	Final Examinations
June	23	2025	Last Day for Submission of University Elective Courses to be Offered in The Fall Term of 2025-2026 by The Elective Courses Commission to The Rectorate
June / July	27-20	2025	Online Course Registration Period for Summer Term 2024-2025
July	01	2025	Last Day for The Submission of Grades to The Registrar
July	02	2025	Last Day for Submission of The Graduation Decisions to The Registrar



Eastern
Mediterranean
University

2024 - 2025
Academic Calendar



July	02-04	2025	Online Application Period for Resit Examinations
July	08	2025	Spring Term Graduate Graduation Ceremony
July	09	2025	Spring Term Associate / Undergraduate Graduation Ceremony
SUMMER Semester			
July	10-16	2025	2024-2025 Spring Term Resit Examinations Period
July	18	2025	Last Day for The Submission of 2024-2025 Spring Term Resit Examinations Grades to The Registrar
July	18	2025	Last Day for Entering Courses to Be Offered In 2025-2026 Fall Term to The System
July	20	2025	Peace and Freedom Day Last Day for Summer Term Online Course Registration
July	21	2025	Last Day for Submission of Graduation Decisions of The Students Who Will Graduate as a Result of 2024-2025 Spring Term Resit Examinations to The Registrar
July	21-22	2025	Course Registration Period (Course Registrations Accompanied by Advisor and Approval of Registration)
July	30	2025	Last Day for Late Registration
August	01	2025	National Holiday
August	04	2025	Online Course Registration for Fall Term 2025-2026 Commences
August	06	2025	Last Day for Add/Drop
August	29	2025	Last Day for Course Withdrawal Last Day of Classes
August	30	2025	Victory Day
September	01-03	2025	Summer Term Final Examinations
September	05	2025	Last Day for The Submission of Summer Term Grades to The Registrar
September	06-08	2025	Online Application Period for Summer Term Graduation Make-Up Examinations
September	08	2025	Last Day for Submission of The Summer Term Graduation Decisions to The Registrar
September	09-10	2025	Summer Term Graduation Make-Up Examinations Period
September	11	2025	Last Day for The Submission of 2024 - 2025 Spring and Summer Term 'Incomplete' Grades and Graduation Make-Up Grades to The Registrar
September	12	2025	Last Day For The Submission of 2024-2025 Summer Term Graduation Decisions and Graduation Decisions of Students Who Will Graduate as a Result of 2024-2025 Spring or Summer Term Incomplete Grades or Graduation Make-Up Examinations Result to The Registrar
September	15	2025	Last Day for Graduation of Students Graduating at The End of 2024-2025 Summer Term and Graduation of The Students Who Complete Incomplete (I) Grades of 2024-2025 Spring Term



Help Desk Locations:

- EMU-2 Dormitory
- Foreign Languages and English Preparatory School
- Social And Cultural Activities Directorate
- Registrar's Office





OPPORTUNITIES OFFERED TO EASTERN MEDITERRANEAN UNIVERSITY STUDENTS

- Providing higher education in TRNC since 1979 with all programs accredited by the Turkish Higher Education Council (YÖK), Eastern Mediterranean University is the only state university in TRNC.
- 107 associate and undergraduate programs, 103 post graduate programs in 12 Faculties and 4 Schools, Foreign Languages and English Preparatory School
- International environment consisting of students from 110 different countries and academic staff members from 35 countries
- Globally recognised diploma
- International accreditations that are held by a handful of institutions
- 3,000,000 m2 modern campus
- English education in accordance with international standards
- Language learning opportunities – German, French, Russian, Spanish, Italian & Greek
- Student Exchange programs
- A modern library with an indoor space capacity of 7,000 m2 and comfortable studying areas – offering 160,000 books and approximately 250 academic memberships
- More than 30 research centers
- Accommodation opportunity for more than 10,000 students in the dormitories
- Indoor sports center with a capacity of 3,500 seats, 5,000 seat capacity stadium with a tartan track, cardio center, spinning hall, TRX hall and 66,500 m2 outdoor sports area
- More than 50 students clubs
- More than 40 International Student Societies
- Health Center with 13 specialist doctors
- Psychological Counseling, Guidance and Research Center (PDRAM)
- Alumni Communication and Career Research Center
- A chance to receive education in a peaceful and safe environment
- More than 65,000 graduates who are successful in their professional lives
- Modern classrooms, laboratories, computer and internet connections
- Collaborations with over 200 institutions in more than 30 different countries

North Cyprus

THE HIDDEN SECRET

North Cyprus is a natural paradise and a home to myriad legends that will fill you with wonder. It is the third largest island in the Mediterranean and has a special geographical location with its proximity to Europe, Asia and Africa. The beautiful landscape surrounded by turquoise waters under the fascinating blue sky will leave you mesmerized. The exciting nightlife filled with entertainment and delights along with the friendly hospitality of the locals ensures a gracious welcome and an unforgettable experience. The endless adventures of the island are waiting to be discovered and you cannot afford to miss any of them, so get ready for an exciting experience.

AT A GLANCE

Official name: Turkish Republic of Northern Cyprus (TRNC)

Capital: Nicosia

President: Ersin Tatar

Official languages: Turkish

Geographical position: Middle East, eastern part of the Mediterranean Sea

Time zone: UTC +2 (in summer: UTC+3)

Official currency: Turkish Lira (TRY)

Seasons: Long dry summers and short, rainy winters

Average annual temperature: 19°C

Swimming season: April-October

Country Code: 0090

Area Code: 0392

PLACES TO VISIT

Lefkoşa (Nicosia)

The capital city of North Cyprus. The city has a unique administrative division: one side belongs to

the Turkish Cypriots and the other to the Greek Cypriots. The last divided city in the world.

Girne (Kyrenia)

This city is located on the northern coast of Cyprus. Girne has a distinctive and unique flavor, beautiful mountain views and plenty of historical and architectural monuments.

Karpaz Peninsula

(Karpas) Located in the eastern part of the island, it is a place for nature lovers and secluded holidays.

Clean sandy beaches merge with the turquoise Mediterranean Sea. Here you can enjoy a holiday close to nature, meet Cyprus symbolic donkeys and visit the Turtle Beach..

Some historical places to visit

- Walled City of Famagusta
- Salamis Ruins with its Bath House, Gymnasium and Theatre
- Saint Barnabas Church
- Palm Beach
- Abbey of Bellapais
- Kyrenia Harbour
- Saint Hilarion Castle.



Living in North Cyprus

NIGHT LIFE

The exciting night life filled with entertainment and delights along with the friendly hospitality of the locals ensures a gracious welcome and an unforgettable experience.

THEATER

Throughout the year, theatrical performances are held at the EMU Cultural and Congress Center and the Municipality Theater. Some theater shows are performed at Othello Castle and Salamis Antique Theater.

INTERNATIONAL FAMAGUSTA ART & CULTURAL FESTIVAL

The festival takes place during July and includes a line-up of everything from classical and jazz to hip-hop, modern rock and reggae, performed by international and local artists.

FOLKLORE

Famagusta also boasts myriad myths and legends borrowed from different cultures or originating from the soil. The Turkish Cypriot culture also incorporates a great diversity of folk dances with various influences.

CUISINE

North Cyprus cuisine is quite varied, with many dishes featuring meat and vegetables to encompass the healthy Mediterranean diet. The local cuisine is an extension of the locals' hospitality.

LIVING EXPENSES

The cost of living in North Cyprus will depend on your standard of living.

TRANSPORTATION

The university owned free shuttle services are available between the campus and city center. The route map is available at the back page of this handbook.

<https://transportation.emu.edu.tr/en>



Living in North Cyprus



ACCOMMODATION

EMU has 19 on-campus dormitory complexes that can accommodate about 10,000 students. New students are given priority in placement. Students may also rent flats or rooms in private accommodation in Famagusta.

EMU'S DORMITORIES

1. EMU Sabancı
2. EMU 2
3. EMU 3
4. EMU 4
5. EMU Akdeniz

PRIVATELY-OWNED DORMITORIES

1. Alfam
2. Astra Plus
3. Golden Plus
4. Grand Aras
5. Inn Dorm
6. Longson
7. Marmara
8. Novel
9. Nural
10. Pop Art
11. Prime Living
12. Ramen
13. Uğursal

<https://dormitories.emu.edu.tr/en>



STUDENT CLUBS

The Social and Cultural Activities Unit has a mission of turning our students into active, creative, social and self-confident individuals. The Social and Cultural Activities Unit organizes concerts, conferences, trips, camps, various sports tournaments, exhibitions and festivals for all students.

Life at EMU is fun. Students have the opportunity to participate in a variety of extra-curricular activities and may join a wide range of social and cultural events in the university. Additionally, every year EMU organizes the 'International Night' as well as the 'International Spring Festival' which include all kinds of social, cultural and sport activities.

<http://activity.emu.edu.tr/>



INTERNATIONAL STUDENT SOCIETIES AND EVENTS

The goal of the International Office is to assist new students with their transition into campus life and provide them with a network of international events to encourage academic and social exploration for as long as needed. Thus, the International Office helps societies create cultural events such as trips, celebrations and much more.

<https://activity.emu.edu.tr/en>





EVENTS

Color Fest
Orientation Days
Welcome Night
Spring Festival
Christmas and New Year
Nowruz Celebration
Sound Set
Türkülerle DAÜ
International Night
Cultural Nights
Sand Sculpture
Architecture and Design Week
Social Media and Brand Week
Rock'n EMU
Sports Tournament
Tourism Days
Republic Day Run
Library/Book Day
Career Days
EMU Civic Involvement
Graduation Ceremony

DISCIPLINARY ACTIONS

For those whose behaviours do not meet student and society's moral values inside or outside the campus, one of the following penalties will be applied by the EMU Student Disciplinary Committee depending on the type of offence.

- Warning
- Short-term suspension from the University (1-15 days)
- Medium and long term suspension from the University (15 days-1 semester)
- Dismissal from the University

Any act of cheating or any behaviour which has an effect on exam results, is deemed as a misdemeanour. Penalty for such behaviour is short-term suspension from the University. In the case of repeated misbehaviour, penalty increases exponentially.

Families are informed about a student's misbehaviour outside the campus. Students found guilty due to off-campus misbehaviour by Judicial Court are referred to the EMU Student Disciplinary Committee where they may also be issued a penalty.

Penalties are not only announced on the University boards, but families are also informed about the case.
<http://mevzuat.emu.edu.tr/>

TRANSPORTATION

The university owned free shuttle services are available between the campus and city center. The route map is available at the back page of this handbook.
<https://transportation.emu.edu.tr/en>

STUDENT SERVICES FUND

An amount of 275 usd is collected from all students at each registration.



Student Affairs

STUDENT SERVICES OFFICE

Operating under the Registrar's Office, the Student Services Office works in coordination with other units responsible for life in campus and student related academic and social issues. The Student Services Office provides the services listed below:

- Immigration Procedures,
- Diploma Approval Procedures,
- Apostille Approval Procedures,
- Embassy Procedures for International Students,
- Call Center.

APOSTILLE APPROVAL PROCEDURES

Apostille procedures are required for graduate students who are to study/work in Europe or the United States. Apostille approval is done on behalf of students by the Student Services Office at the Registrar's Office.

EMBASSY PROCEDURES FOR INTERNATIONAL STUDENTS

All international students graduating from EMU are expected to have their diplomas approved by their country's embassies in Ankara.

CALL CENTER

Eastern Mediterranean University Call Center provides services for the incoming calls in accordance with the requests and needs of the callers. EMU Call Center is here to provide help to students on all issues; (+90 392 630 11 11). Please visit the Student Services Office website for more information

<https://registrar.emu.edu.tr/en/student-services-office>

IMMIGRATION PROCEDURES (Residence Permit)

- Those who will study at an undergraduate, graduate, master's or doctorate program at a higher education institution in the Turkish Republic of Northern Cyprus are required to apply for a student residence permit.
- In order to start the immigration procedures, you must have an active student status.
- Update your personal information from your departmental desk at the Registrar's Office.
- Once the information has been updated, the data will be transferred to the online system of the TRNC Ministry of Internal Affairs within the same day.

- Then, start your registration procedures at the online immigration procedures section of the webpage of the TRNC Ministry of Internal Affairs. (<https://per-missions.gov.ct.tr>)

- After accessing the TRNC Ministry of Internal Affairs' webpage, you need to click on "register now", fill in the requested information on the page that opens and complete the registration process.

- After the requested information has been completed, information regarding your user code and password will be sent to you via e-mail or telephone. In line with this information, you will be able to access the immigration page.

- After logging into the Immigration page, you must first approve your health report. If you have a health report, upload it to the system in PDF format.

- Health reports for students with Turkish nationality must be obtained from a fully-fledged state or university hospital (the validity period is 2 years.)

- Medical reports should include lung scopy or chest X-ray for tuberculosis and HCV-HIV-HBSAG-RPR examinations. (Reports are valid for 2 months from the date of receipt.)

- Students from third countries will obtain their medical reports at the health institutions specified by the immigration system (valid for 1 year).

- After uploading the health reports to the system, the reports must be submitted to the relevant State Hospital.

- State hospital health reports unit will evaluate the uploaded health report and ensure the continuation of the process. The result of the laboratory examination will be approved over the single physician report fee specified in the Health Institutions Fee Schedule Regulation of the TRNC Ministry of Health. However, in cases where the Ministry requires additional examinations, students will pay the full fee according to the fee schedule set in the Health Institutions Fees Tariff Regulation.



Student Affairs

- Students who do not have a health report will follow the procedures at the Student Permits Automation System in order to receive a health report.
- You will proceed to the next stage after the reports uploaded to the system are approved by the Ministry of Health.
- Information about the student permits that are ready will be sent to the phone number or e-mail address you specified during registration.

- Students who have completed their immigration procedures can obtain their residence permit from their own immigration procedures portal. Further information can be obtained from the immigration procedures guideline.

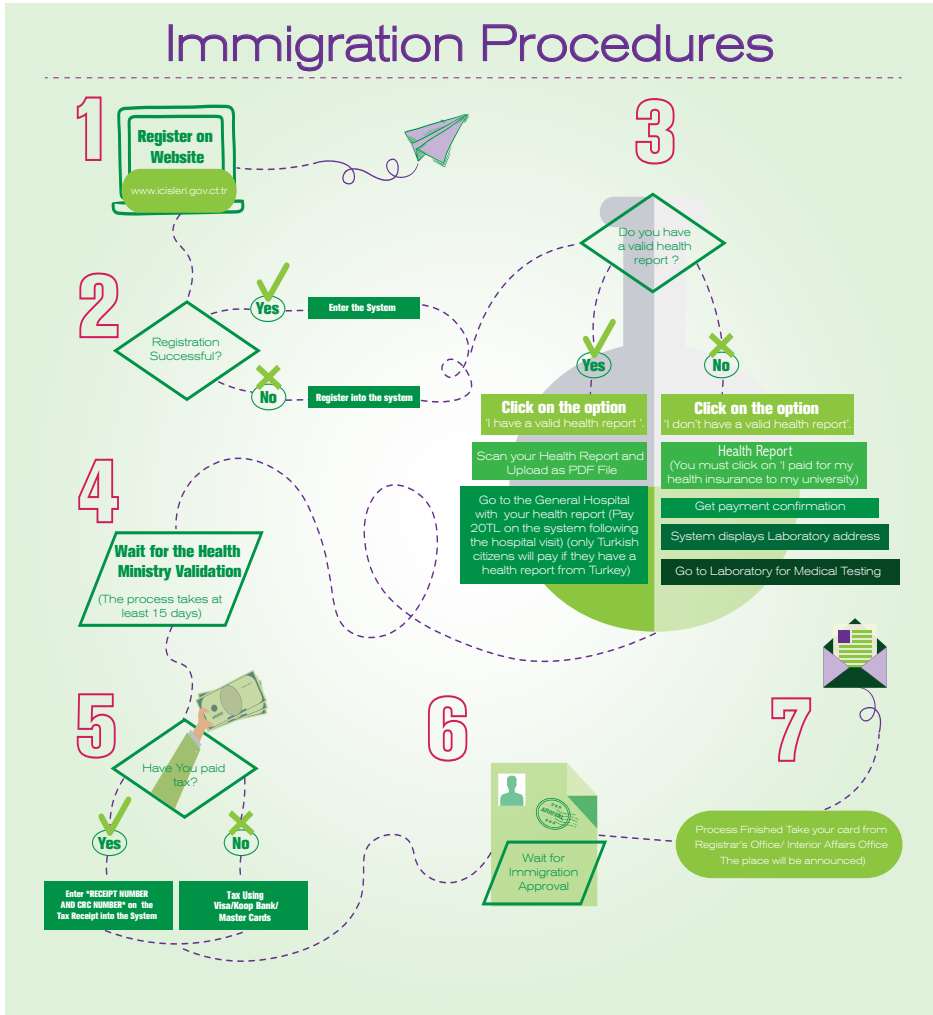
https://permissions.gov.ct.tr/documents/help_tr.pdf



IMMIGRATION PROCEDURE

IMMIGRATION PROCEDURE (Residence Permit)

In order to complete Immigration Procedures, it is mandatory to enter TRNC with a passport. Immigration procedures are completed online. Follow the steps listed below to complete the process:



IMPORTANT INFORMATION

Students who complete the registration procedures are required to complete the immigration procedures within the period of time provided upon their entry to TRNC.

Students who fail to complete the immigration procedures within the specified period of time

will be subject to a daily penalty due to not holding a legal residence permit.

Students coming from third countries are obliged to renew their health reports every year. Students coming from Turkey are obliged to renew their health reports every 2 years.

Academics

REGISTRATION

INTERNATIONAL Students

Conditions for Admission and Registration.

The applicant must submit a certified copy of Higher Secondary School Certificate or Intermediate Certificate or the equivalent, demonstrating that s/he has satisfactorily graduated from a secondary school, and must arrange for other relevant certified documents, such as transcripts or detailed mark sheets, to be released to EMU.

Application to Undergraduate Programs

Applications to the undergraduate programs are accepted twice a year.

Accepted High School Certificates for undergraduate programs

High School Diploma, Higher Secondary School Certificate, General Certificates of Secondary Education (GCSE), Higher Secondary Certificate, Upper Secondary /Secondary School/ High School/ Senior High School Leaving Certificate, Testimonial, Secondary Education Certificate, Senior School Certificate, Matriculation Examination Certificate, SAT , WAEC , WASSCE , NECO , JAMB, BACCALAUREATE.

Admission Requirements to Graduate Programs

- Applications to the graduate programs at EMU can be made throughout the year, until one month prior to the beginning of each semester.
- Applicants are advised to make their applications by the end of December or August for Spring and Fall semesters, respectively. Application deadlines are announced on the web site of the Institute for Graduate Studies and Research and the Registrar's Office. Prospective applicants are required to apply online.

<https://grad.emu.edu.tr/en/admission>



ACADEMIC ADVISING

The aim of the Student Advisorship at Eastern Mediterranean University is to help students in solving the problems they may encounter primarily in academic areas, to provide guidance, to assist them in their chosen profession, to inform them about the facilities of the university and faculty/school, to monitor their academic performance and success, in case of failure, to provide relevant assistance and to help in course selection. Academic advisors are faculty members who are appointed by the relevant Department Heads or Directors and announced on department boards.

<http://mevzuat.emu.edu.tr>

CLASS ATTENDANCE

Students are responsible for attending the lessons, laboratory hours and workshops, all the exams that take place within the semester and all other projects/applications to fulfill program requirements. A student who fails to attend 20% or more of a course or its applications without any excuse, fails the course and receives a Nil Grade (NG).

The student is accepted as unsuccessful due to not attending the course.

<http://mevzuat.emu.edu.tr>

GRADE CALCULATION (CGPA - GPA)

A student's academic achievement for each term is expressed numerically by an index referred to as the 'Grade Point Average' - GPA. The GPA is the weighted average of course grades. When calculating the course grade, mid-term exam(s), the final exam, lab/workshop reports and/or exams (if applicable), tests, projects, and/or homework are taken into consideration. The CGPA is the cumulative average of all courses taken during all semesters.

<http://mevzuat.emu.edu.tr>



Facilities and Services

IDENTIFICATION CARDS

An ID card is issued to each undergraduate and graduate student. The card is a debit card and can be used for payment in any shop. An ID card can be asked to be presented in order to attend events or activities. Additionally, the card may be credited with units which can be debited for payments.

<http://mevzuat.emu.edu.tr>

HEALTH CENTER

Specialists provide free health services both to students and staff members in 7 different areas, namely internal medicine, dermatology, dentistry, E.N.T, gynaecology, psychiatry, urology and ophthalmology. In addition to these services, the center provides first aid and short-term bed-services.

www.emu.edu.tr/healthcenter

PSYCHOLOGICAL SUPPORT

EMU-PDRAM's services are available for those times when you need someone to talk to, sort a situation out, or review what is not working well in your life. EMU-PDRAM strictly observes confidentiality as its guiding principle.

<https://pdram.emu.edu.tr/en>

ALUMNI COMMUNICATION AND CAREER RESEARCH DIRECTORATE (MIKA)

MIKA offers career consultancy services for students both during their study period and following their graduation. In this respect, seminars, workshops and training programs aiming for a sustainable career are frequently organized by the Directorate.

<https://alumni.emu.edu.tr/en>



Facilities and Services

CANTEENS AND CAFETERIAS

About 35 cafeterias and canteens on EMU campus provide students with clean and good-quality food services at reasonable prices. There is one Table D'Hote restaurant on the campus which serves healthy meals at an affordable price. All meals are prepared in accordance with the daily calorie needs of the students.

<https://cafeterias.emu.edu.tr/en>

BANK SERVICES

On the EMU campus, there are two branches of Koop Bank and a number of ATMs belonging to different banks where foreign Visa or Master Cards can be used to withdraw money.

<http://www.koopbank.com>

REGISTRAR'S OFFICE

The Registrar's office deals with any kind of student-related issues such as official documents, transcripts, leave of absence (freezing registration), and graduation documents etc. Additionally, the unit guides students in dealing with the procedures at the Turkish Embassy in Nicosia.

<https://registrar.emu.edu.tr/en>

INTERNATIONAL OFFICE

The office is dedicated not only to looking after the welfare of our international students but also making sure that they are provided with a full range of social and cultural activities. The office takes full advantage of EMU's outstanding facilities, including the new Cultural and Conference Center, and the private Beach Club to offer students an experience they will never forget. Every year, representatives of Student Societies are elected and these students collaborate with the International Office to help and assist members of their societies during their studies at EMU.

<http://io.emu.edu.tr/en>, [facebook.com/ioemu](https://www.facebook.com/ioemu),

<https://studentexchange.emu.edu.tr/en>

twitter.com/io_emu, [instagram.com/io_emu](https://www.instagram.com/io_emu)

SOCIAL & CULTURAL ACTIVITIES

DIRECTORATE

Students can contact the unit in order to join or form a new club. After one year of an active membership in any club, students can apply for being a candidate in the executive board of the relevant club. Club members also benefit from the facilities provided to them on behalf of the Social and Cultural Activities Directorate. Students who would like to join a club can fill in a form available on EMU's website.

<http://activity.emu.edu.tr>

LIBRARY

The library views continuous development as an absolute necessity. It encourages scientific research and information literacy at the university and provides support for activities in these areas and also fulfils an important function through compiling EMU publications, offering this archive to its readers, and promoting it worldwide. During the exam period, the library works 24 hours a day and provides comfortable and conducive areas to study alone or in groups. Books can be borrowed for up to 1 month depending on the academic level. The library has over 150,000 printed books as well as thousands of e-books and online journals available to all through online access.

<http://library.emu.edu.tr>

POST OFFICE

The university's Post Office is located at Sabanci Dormitory, Ground Floor. The Post Office is responsible for the organization, operation and provision of postal services, the safe and fast handling and delivery of postal items. Students can send/ receive parcels to/ from any part of the world.

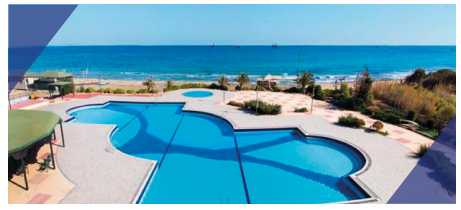
LALA MUSTAFA PAŞA SPORTS COMPLEX

With a capacity of 3500 seats, the LMP Sports Complex boasts 3 Squash halls, a Jui-Jitsu studio, tartan track and a football pitch, all providing sports services at international standards. It has a mission of spreading sports activities nationwide. This directorate takes part in national leagues in the fields of volleyball, basketball, athletics, tennis, handball, billiards, chess, wrestling, cycling, table tennis, triathlon, football and tennis. Students representing the university in the leagues are awarded scholarships by the university. Last but not least, the cricket, bowling, darts, swimming, futsal and football teams successfully represent the University in the inter-university tournaments and leagues. The Sports Complex is accessible to all students.

<https://spor.emu.edu.tr/en>

Facilities and Services

OFF CAMPUS FACILITIES



It is used throughout the year for beach and pool parties and as a place of relaxation for both staff and students. A full restaurant service is available, and with a large swimming pool and family facilities, students are able to take full advantage of the Mediterranean climate in an exclusive high-class setting.

<https://ww1.emu.edu.tr/en/campus/international-office/beach-club/1256>



Rauf Raif Denktaş Culture and Congress Center houses convention and conference rooms, exhibition halls, museums, art workshops and more.

**These off campus facilities host most of EMU's cultural activities, conferences, workshops and seminars taking place throughout the year. EMU's bus line number 3 goes to both of these destinations. For the bus schedule please refer to page 24 of this booklet.*

<https://ww1.emu.edu.tr/congresscenter>



ONLINE APPLICATION GUIDE AND REGISTRATION PROCEDURE

Online Application Guide: <https://www.youtube.com/watch?v=FvEkvF-mTUU>

Registration Procedures:

We have initiated a new online registration system in order to facilitate the registration process of our new students. You can complete your registration process by following the steps listed below:

1. To login, you should access the student portal - <https://stdportal.emu.edu.tr> and enter your Student Number and Password which are as follows for new students:

Student number: 11111111

Password: *ID/Passport No.

*Your ID/Passport No. is the same number that you wrote in your application form.

2. By logging in your portal, you will be able to register. If you have been accepted in more than one program, you should choose the program you would like to be enrolled in.

3. Tuition Fee can be paid online by using a credit card through the student portal (<https://stdportal.emu.edu.tr>). The link for online payment can be found under the Tuition Fee Payment Information section. If you are planing to pay your tuition fee via bank transfer, please upload the bank receipt using this link: <https://stdportal.emu.edu.tr>.

4. After you complete the Tuition Fee payment procedure, you will be able to continue all student-related procedures via your portal: <https://stdportal.emu.edu.tr>.

To find detailed information about EMU, Dormitories, Campus Life, Rules and Regulations, and other issues, please visit <https://www.emu.edu.tr/prospectivestudents>.

Please contact international.center@emu.edu.tr for your application inquiries

WhatsApp Helpline for prospective students +905338575418

Accreditations

University Level Recognitions



YÖK - Turkish Republic Higher Education Board



YÖDAK - Higher Education Planning, Inspection, Accreditation and Evaluation Board



UK ENIC - The UK National Information Centre for global qualifications and skills



ECFMG - Educational Commission for Foreign Medical Graduates



ICE - Institution of Civil Engineers

Faculty, Department and Program Level Accreditations



ABET - The Accreditation Board for Engineering and Technology



SABAK - Sağlık Bilimleri Eğitim Programları Değerlendirme ve Akreditasyon Derneği



AQAS - Agency for Quality Assurance Through Accreditation of Study Programs



PCN - Pharmacists Council of Nigeria



ASIIN - Accreditation Agency for Degree Programmes in Engineering, Informatics, Natural Sciences and Mathematics



EUQANIE [Euro-Inf] - European Quality Assurance Network for Informatics Education



EPDAD - Öğretmen Eğitim Programları Değerlendirme ve Akreditasyon Derneği



FIBA - Foundation for International Business Administration Accreditation



TPD - Türk Psikologlar Derneği (Turkish Psychologists' Association)



MiAK - Mimarlık Akreditasyon Kurulu (Architectural Accrediting Board)



NAB - National Architectural Accrediting Board



TEDQUAL - Teaching Education Quality in Tourism

Faculty, Department and Program Level Memberships



ACSA - Association of Collegiate Schools of Architecture



AAAE - European Association for Architectural Education



IFI - International Federation of Interior Architects/Designers



AMS - The American Mathematical Society



ECPR - European Consortium for Political Research



PRME - Principles for Responsible Management Education



AACSB - Association to Advance Collegiate Schools of Business



EUPREPA - European Public Relations Education and Research Association



ICO-D - International Council of Design



IAMCR - International Association for Media and Communication Research



ADEE - Association for Dental Education in Europe



TESOL - International Association of Teachers of English to Speakers of Other Languages



IATEFL - International Association of Teachers of English as a Foreign Language



ESTIEM - European Students of Industrial Engineering and Management



EMT - Türkiye Endüstri Mühendisliği Toplumlukları Birliği



WWD - Worldwide Directory of Systems Engineering and Industrial Engineering Programs



ATLAS - Association for Tourism and Leisure Education and Research



ELFA - European Law Faculties Association



IEEE - Institute of Electrical and Electronics Engineers



WDOMS - World Directory of Medical Schools



FIP - International Pharmaceutical Federation



IPSF - International Pharmaceutical Students Federation



WACS World - Association of Chefs Societies



AEHT - European Association of Hotel and Tourism Schools



ADEE - Association for Dental Education in Europe



AMFORHT - The World Association for Hospitality and Tourism Education and Training



COHEHRE - Consortium of Institutes of Higher Education in Health and Rehabilitation in Europe



Crossref - Cross Reference



Cumulus Association



ECREA - European Communication Research and Education Association



EPSA - European Pharmaceutical Students Association



EUCEN - European University Continuing Education Network



EURIHOPIP - International Association supporting Hospitality and Tourism Education and Training



HOSCO - Hospitality Network



ILA - International Language Association



ILTA - International Language Testing Association



IPB - Institut Paul Bocuse



TUSEM - Türkiye Üniversiteler Sürekli Eğitim Merkezleri Konseyi

Faculty, Department and Program Level Certifications & Approved Centers



ETS - Educational Testing Service



City & Guilds Centre Approval (Unique Centre No. 821314)



EDEXCEL - Pearson



TOLES - Test of Legal English Skills



IWSA - International Wine & Spirits Academy



LCCI - London Chamber of Commerce Industrial Qualifications



WSET - Wine & Spirit Education Trust

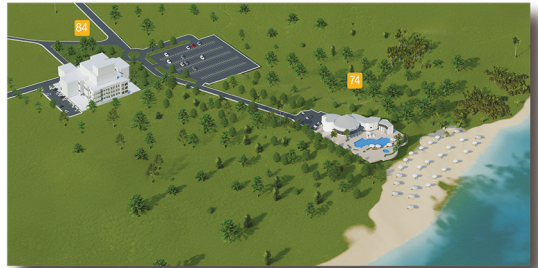


<http://bit.ly/emu-campusmap>

- | | | | | | |
|----|----------------------------------------------------------------|----|-------------------------------------------------------------------|----|------------------------------------------|
| 1 | Central Lecture Halls | 19 | Faculty of Pharmacy | 51 | Inn Dormitory |
| 2 | Department of Civil Engineering | 20 | Faculty of Tourism | 52 | Longson Dormitory |
| 3 | Department of Computer Engineering | 21 | Foreign Language & English Preparatory School and Annex | 53 | Marmara Dormitory |
| 4 | Department of Electrical & Electronic Engineering | 22 | Foreign Language & English Prep. School, Modern Language Division | 54 | Namık Kemal Guest House - II |
| 5 | Department of Fine Arts Education | 23 | Institute of Graduate Studies & Research | 55 | Novel Centrepont Dormitory |
| 6 | Department of Mechanical Engineering | 24 | Prosthetics Orthotics & Biomechanics Center | 56 | Nural Dormitory |
| 7 | Eastern Mediterranean Doğa College | 25 | Rector's Office | 57 | Pop Art Dormitory |
| 8 | Eastern Mediterranean Doğa Primary School | 26 | School of Computing & Technology | 58 | Prime Living Dormitory |
| 9 | Faculty of Architecture | 27 | Visual Arts & Visual Communication Design - Techno Park | 59 | Ramen Dormitory |
| 10 | Faculty of Arts & Sciences | 41 | Alfam Vista Dormitory | 60 | T.C. Yurtkur Necmettin Erbakan Dormitory |
| 11 | Faculty of Business & Economics - School of Business & Finance | 42 | Astra Plus Dormitory | 61 | T.C. Yurtkur Necmettin Erbakan Dormitory |
| 12 | Faculty of Communication & Media Studies | 43 | EMU Akdeniz Dormitory | 62 | T.C. Yurtkur Necmettin Erbakan Dormitory |
| 13 | Faculty of Dentistry | 45 | EMU 2 Dormitory - EMU Dormitory Directorate | 63 | T.C. Yurtkur Necmettin Erbakan Dormitory |
| 14 | Faculty of Education | 46 | EMU 3 Dormitory | 64 | Uğursal Dormitory |
| 15 | Faculty of Engineering - Department of Industrial Engineering | 47 | EMU 4 Dormitory | 71 | Accounting Affairs & Personnel Affairs |
| 16 | Faculty of Health Sciences - School of Health Services | 48 | Golden Plus Dormitory | 72 | Administrative Facilities |
| 17 | Faculty of Law - School of Justice | 49 | Grand Aras Dormitory | 73 | Animal Shelter |
| 18 | Faculty of Medicine - Clinical Application Center | 50 | Halide Edip Guest House - I | 74 | EMU Beach Club |




1800 meters ahead



Map

- | | |
|---------------------------------------------------------------------------------------------------|-----------------------------------------------------------------------------------------------|
|  Academic |  Kiosk |
|  Dormitory |  Post Office |
|  Administrative |  ATM |
|  Food Facilities |  Bank |
|  Entrance |  Security |

- | | |
|-------------------------------------------------------------------------------------|---------------------------------------------------------|
|  | 75 Church |
|  | 76 Computer Center |
|  | 77 Continuing Edu. Center - Total Quality Man. Center |
|  | 78 Health Center - Psy. Counselling Guid. & Res. Center |
|  | 79 International Office |
|  | 80 Lala Mustafa Paşa Sports Complex |
|  | 81 Library |
|  | 82 Mosque |
|  | 83 Open Air Sports Facilities |
|  | 84 Rauf Raif Denktaş Culture and Congress Center |
|  | 85 Registrar's Office |
|  | 86 Social & Cultural Activities Center - EMU Coop Ltd. |
|  | 87 Stadium |
|  | 88 Table d'hote Restaurant - Lapprenti |
|  | 89 Technical Affairs |

Block A
Block B
Block C
Block D

WHEELCHAIR ACCESS INFORMATION

-  Full access to all floors
-  Mostly accessible
-  Ground floor only
-  Toilets accessible to wheelchair users within building
-  Entrance suitable for wheelchair access
-  Entrance with ramp
-  Slope over 10%
-  Car parking space for disabled drivers

KUZEY NORTH



Touristic Road N



KIBRIS CYPRUS

Map

D E N İ Z
(Mediterranean Sea)



D E N İ Z
(Mediterranean Sea)

1:1,000,000
0 10 20
Kilometers

www.welcometoNORTH CYPRUS.org



/North Cyprus Tourism Centre



@NOCyprus Tourism

Promotion and Marketing Department
CHARGE

State Copyright Reserved